

Architectural Poles

OptoLed
Saving Energy



Beretto

Mechanical Details

- Aluminium or steel pole
- Polycarbonate diffuser
- Stainless steel screws
- Waterproof and durable silicone rubber gaskets
- Electrostatic powder coating
- Mechanical impact resistance IK 08
- Protection Grade IP66
- Electrical installation Class I
- Electrostatic polyester powder coating with high thermal conductivity

Electrical Details

- DC forward current : 110mA
- PMMA Optical Lens Efficiency : >88%
- PCB Heat Conductivity : >1.2W/mK
- Input Voltage : 230VAC
- Frequency Range : 47 ~ 63Hz
- Power Factor : >0.9
- Total Harmonic Distortion(THD) : <15%
- Color Temperature : 3000-6500 (K)
- Color Rendering Index : >70
- Temperature of Working Condition : - 40C to + 55C
- Humidity of Working Condition : 10% ~ 90%
- Led Efficiency (Typ.) : 141 (lm/W)
- Working Life : >50,000Hrs
- Protection Grade : IP66

Specification

Code	Watt	Lamp	Lumen
Beretto	18W	Power Led	1890 lm.
Beretto	44W	Power Led	4620 lm.

Technical Detail



Anchorage

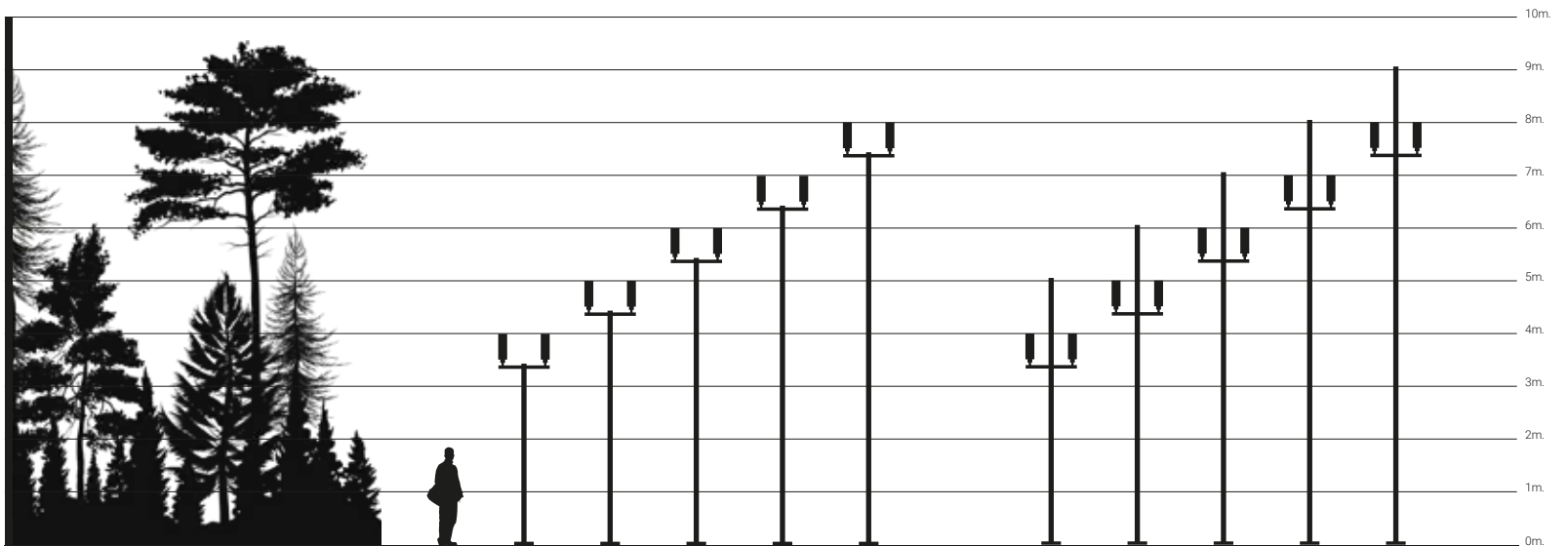
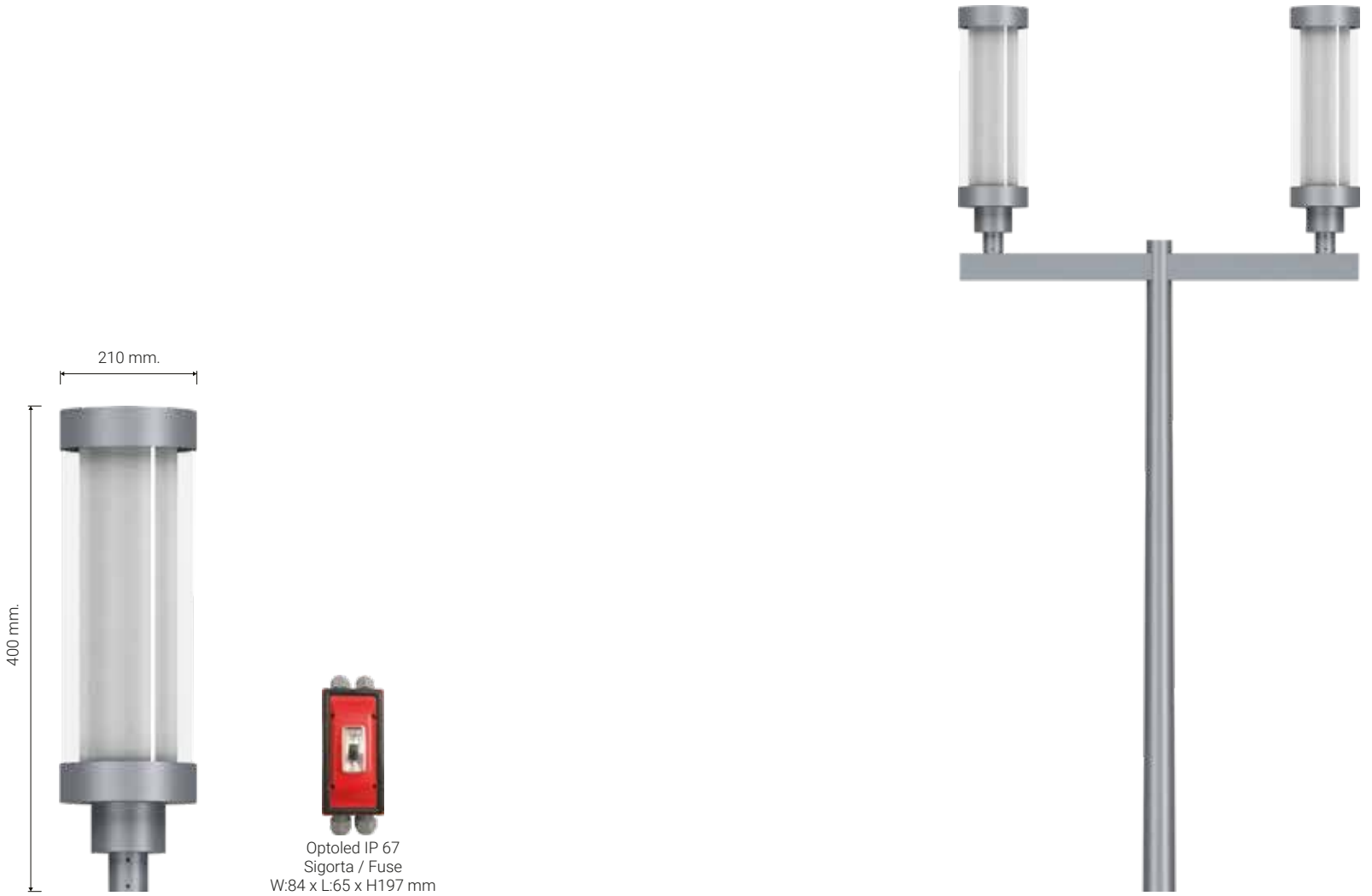


Flange Cover



Standards

Beretto



Beretto



