

Architectural Poles

OptoLed
Saving Energy



KalTEDon

Mechanical Details

- Extruded aluminium profile
- Stainless steel screws
- Waterproof and durable silicone rubber gaskets
- Electrostatic powder coating
- In compliance with European Standards EN-60598
- Mechanical impact resistance IK 08
- Protection Grade IP66
- Electrostatic polyester powder coating with high thermal conductivity

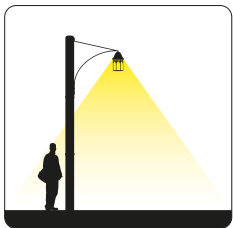
Electrical Details

- LED Quantity : 18pcs Power LED
- DC forward current : 350mA
- Optical Lens : 10-25-45-60
- PCB Heat Conductivity : >1.2W/mK
- Power Consumption : 18W
- Input Voltage : 30VAC , 24VDC
- Frequency Range : 47 ~ 63Hz
- Power Factor : >0.9
- Color Temperature : 3000-6500 (K)
- Color Rendering Index : >70
- Temperature of Working Condition : - 40C to + 60C
- Humidity of Working Condition : 10% ~ 90%
- Working Life : >50,000Hrs
- Protection Grade : IP66

Specification

Code	Watt	Lamp	Current	4000K (lm)
Lanterna	44W	COB Led	700mA	4670 lm.
Lanterna	2x44W	COB Led	700mA	9240 lm.

Technical Detail



Anchorage

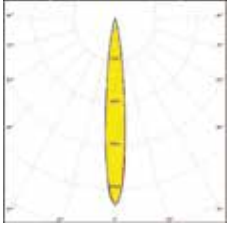
Standards



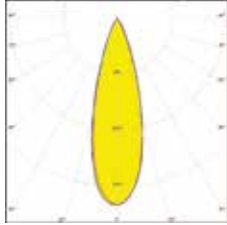
Kaltedon

Optical Details

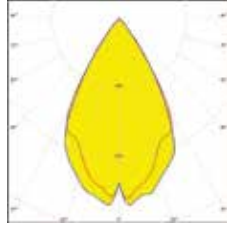
- FA11199_TINA-O
- Short IESNA Type II beam for narrow roads or high poles with extremely low glare. Optimized for CREE XM-L.



Dimensions: 16.1 mm x 16.1 mm
Height: 9.66 mm
~16° diffused spot beam Assembly with holder and installation tape.



Dimensions: 16.0 mm x 16.0 mm
Height: 9.50 mm
~30° medium beam. Assembly with holder, installation tape and location pins.



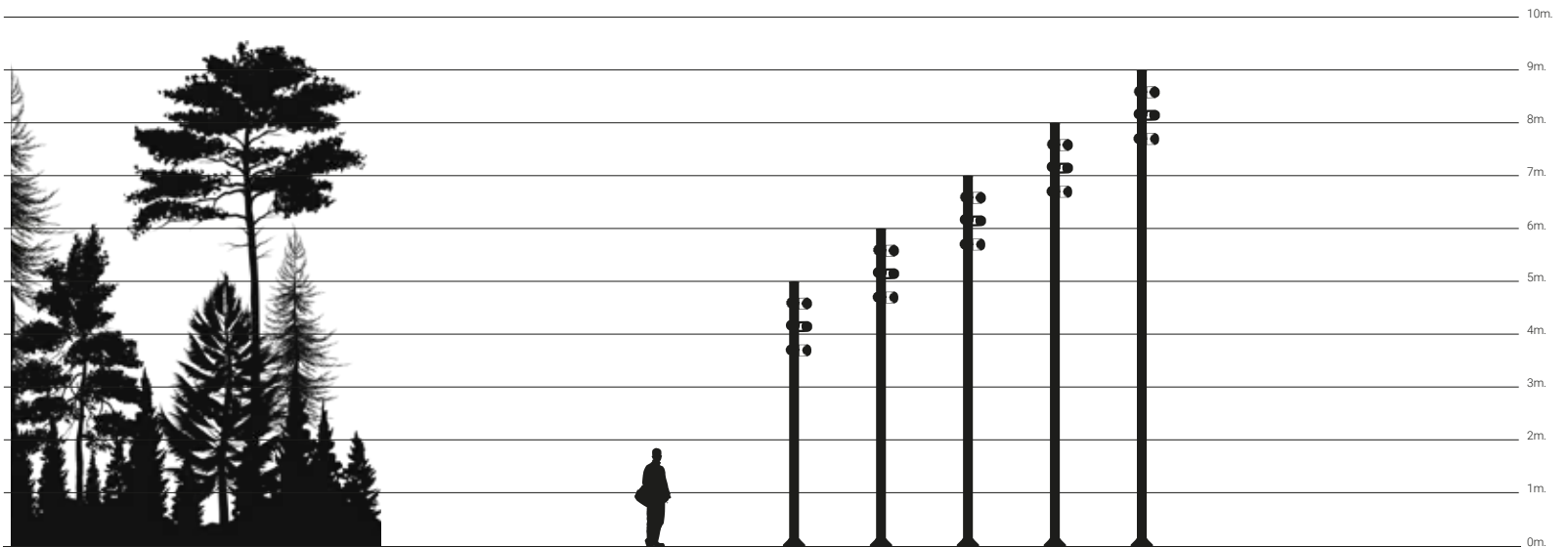
Dimensions: 16.1 mm x 16.1 mm
Height: 11.00 mm
~60° wide beam optimized for Nichia NS6x83. Assembly with holder and installation tape.



Opto Lego LED Modul



Optoled IP 67
Sigorta / Fuse
W:84 x L:65 x H197 mm



KalTEDon





Kalkedon