



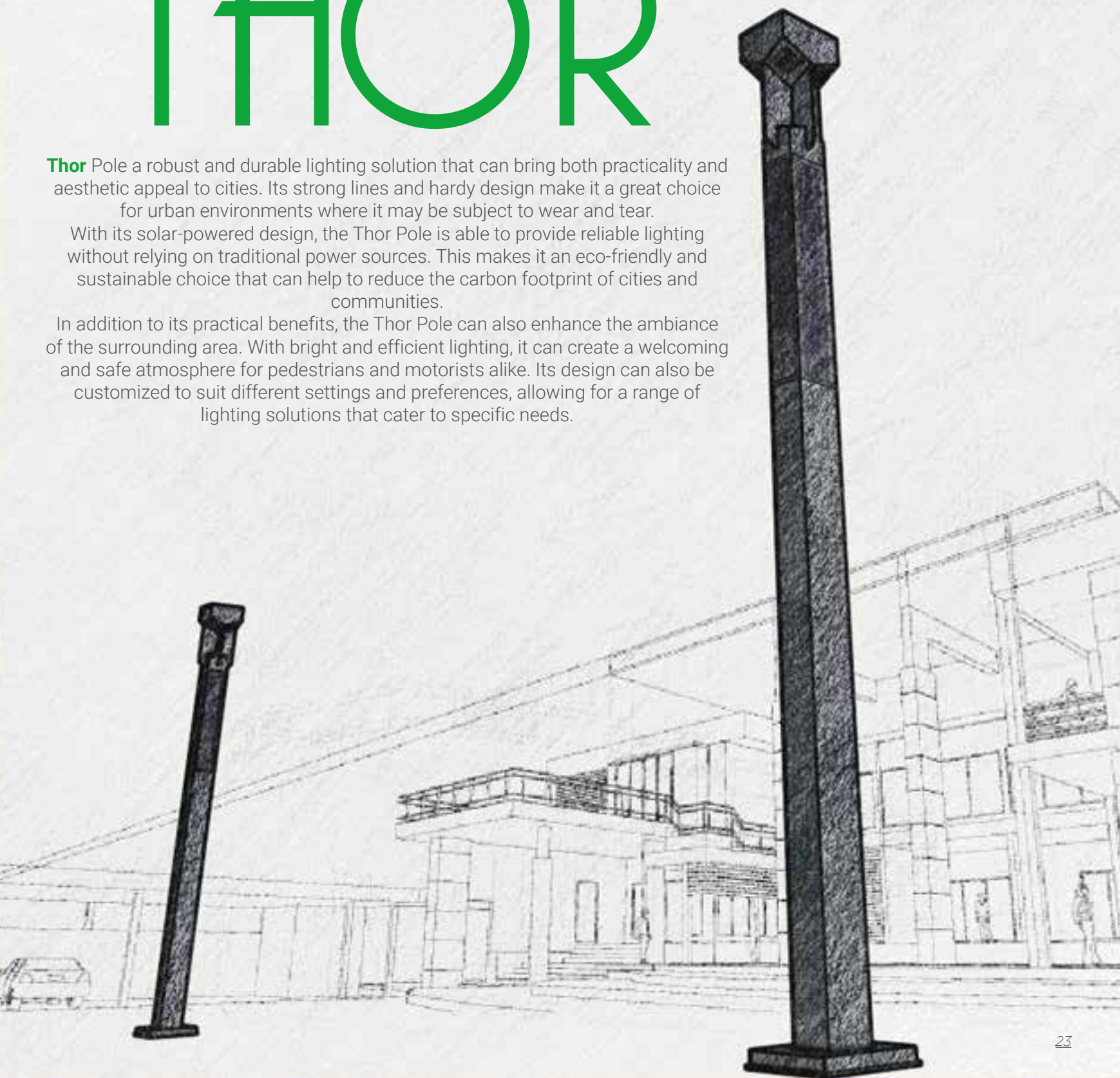
OptoSolar

# THOR

**Thor** Pole a robust and durable lighting solution that can bring both practicality and aesthetic appeal to cities. Its strong lines and hardy design make it a great choice for urban environments where it may be subject to wear and tear.

With its solar-powered design, the Thor Pole is able to provide reliable lighting without relying on traditional power sources. This makes it an eco-friendly and sustainable choice that can help to reduce the carbon footprint of cities and communities.

In addition to its practical benefits, the Thor Pole can also enhance the ambiance of the surrounding area. With bright and efficient lighting, it can create a welcoming and safe atmosphere for pedestrians and motorists alike. Its design can also be customized to suit different settings and preferences, allowing for a range of lighting solutions that cater to specific needs.



# OptoSolar

Saving Energy

## THOR

### Thor Mechanical Details

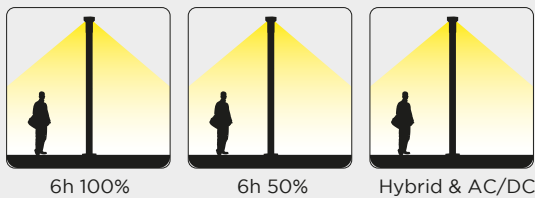
- Aluminium body and accessories
- Stainless steel screws
- Silicone gasket
- In compliance with European Standards EN-60598
- Mechanical impact resistance IK 08
- Protection Grade IP66
- Electrical installation Class I
- Electrostatic polyester powder coating with high thermal conductivity

### Thor Electrical Details

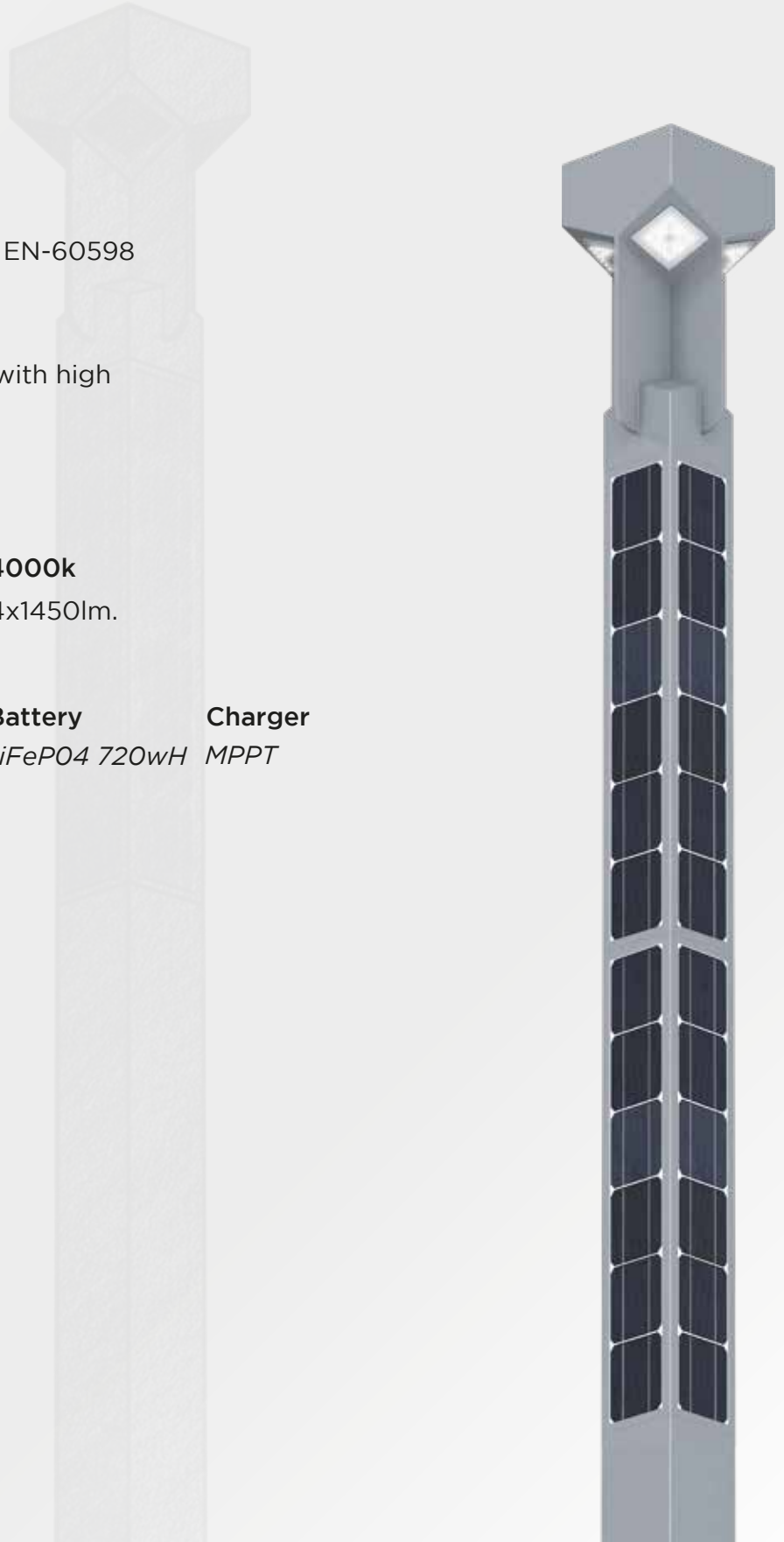
|                              |            |              |
|------------------------------|------------|--------------|
| <b>Thor Lighting Details</b> | <b>Led</b> | <b>4000k</b> |
| Single (5mt.)                | 4x10W      | 4x1450lm.    |

|                           |                        |                |                |
|---------------------------|------------------------|----------------|----------------|
| <b>Thor Solar Details</b> | <b>Square Solar P.</b> | <b>Battery</b> | <b>Charger</b> |
| Single (5mt.)             | 2x160W                 | LiFePO4 720wh  | MPPT           |

### Dimming



Charging

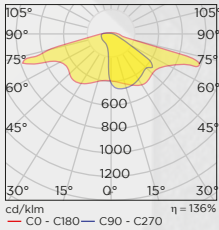
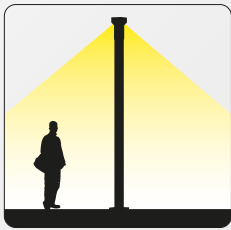
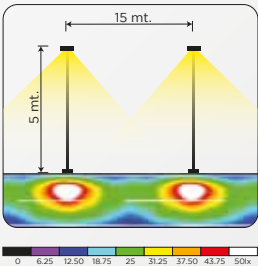


# OptoSolar

Saving Energy

# THOR

## Optical Details



## Technical Details

